

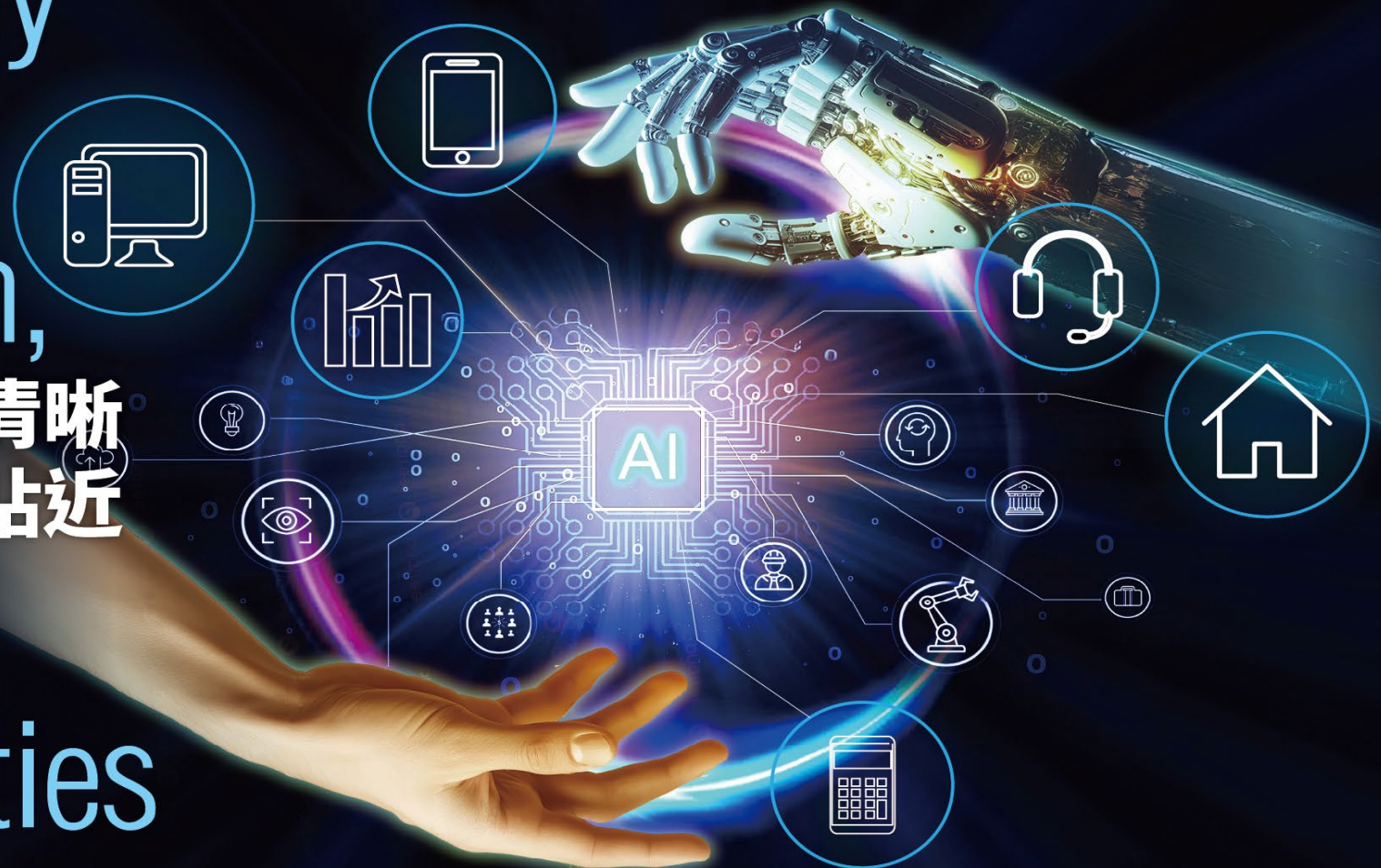
# Taiwan Thick-Film Industries Corp.

## 2025 Q4 Investor Conference

Technology  
Advances  
Innovation,

科技讓世界更清晰  
智慧讓服務更貼近

Linking  
Opportunities  
Nearer.



Presenter : Chris Kao, Vice President  
TEL : 02-22772828  
Email : hckao@tai-lon.com

# Disclaimer

**Disclaimer:** This report contains forward-looking statements regarding relevant information and content that involve significant risks and uncertainties. The content of this report is based on the Company's current status and views regarding the future. These views may be influenced by internal and external risks as well as uncertainties beyond the Company's control. Actual future results may differ materially from the forward-looking information in this presentation.

**Notice:** Any forward-looking views in this presentation are explanations based on the status as of the release date of this report. Except as required by law, the Company assumes no obligation or responsibility to update such forward-looking information or guarantee the accuracy of this presentation data in the event of any future changes or adjustments.

Taiwan Thick-Film Industries Corp.

# Agenda

- Company Profile
- 2025 Q1-Q3 Operation Review
- Key Outlook
- Q&A

# Company Profile

## Technology makes the world clearer; Intelligence brings services closer.

Taiwan Thick-Film Industries Corp. was established in 1982. Upholding the principles of "Research, Development, Innovation, and Progress," we continuously adjust our R&D and manufacturing products according to market demand trends. From CRT high-voltage components, transformers, backlight modules, and LED Light bars at our inception, to current automotive display LCD modules, every product utilizes "Innovation" and "Creativity" to make us an indispensable partner to our customers!

With the full arrival of the 5G era, we are entering a new epoch of Internet of Everything application services. Cars are no longer merely tools for transportation but are integrating entertainment, communication, and big data services into personalized mobile spaces. To meet user demands for increasingly enhanced multi-functional digital integration services, vehicles have undergone significant upgrades in the quantity, size, and specifications of displays. Tailon has cultivated this professional field for many years, accumulating profound experience and technical foundations. We transform this foundation into momentum, continuously expanding the R&D and manufacturing breadth of automotive display components, ensuring we provide customers with more competitive differentiated products, more efficient flexible production models, and a more robust resilient operational structure.

# Company Fact Sheet

- Date of Establishment: November 13, 1982
- Address: 3F, No. 7, Lane 332, Siyuan Road, Xinzhuang District, New Taipei City, Taiwan
- Employees: 433 (Taiwan HQ: 21, Dongguan Hualon: 221, Kunshan Tailon: 191)
- Paid-in Capital: NT\$ 378 Million
- Listing Date: June 18, 2003 (TPEX Stock Code: 6246)
- 2024 Consolidated Revenue: NT\$ 1,501,968 (Thousands)
- Main Products: Light Bars, Backlight Modules, Automotive Display LCD Modules, ASA Tech Plastic Steel Roofing Sheets

# GLOBAL LOCATIONS



## **Taiwan Thick-Film Industries Corp.**

Operational HQ, AI Application System Services.

Add: 3F, No. 7, Lane 332, Siyuan Road, Xinzhuang District, New Taipei City, Taiwan



## **Hualon Electronics Co.,Ltd.**

Transformer, backlight module, LCM module assembly

Add: Tiantou Industrial Management District, Hengli Town, Dongguan City, Guangdong Province



## **Tailon Electronics (Kunshan) Co., Ltd**

LIGHT BAR · SMT

Address: No. 569, Zhenyang Road, Zhangpu Town, Kunshan City, Jiangsu Province

# Milestones

- 1982: Company established; engaged in the production of focusing components and high-voltage resistor plates.
- 1986: Engaged in the production and assembly of high-voltage caps.
- 1987: Passed ISO-9001 quality certification; produced flyback transformers.
- 1990: Dongguan Hualon Electronics established.
- 1996: Established SMT R&D team & Backlight Module R&D team.
- 2001: Established Transformer R&D team and set up inverter transformer production; established backlight module production plant in Wujiang, China - Junlong Electronics.
- 2003: Listed on the Taiwan OTC Exchange (IPO) on June 18.
- 2013: Passed TS16949 Automotive System Certification.
- 2015: Tailon Electronics (Kunshan) Co., Ltd. expanded production lines and established Tai-Long Electronics (Suzhou) Co., Ltd.; passed IATF16949 certification.
- 2019: Group adjusted operating direction, retaining two major subsidiaries: Dongguan Hualon and Kunshan Tailon. Focused on professional design and production of Light bars and Backlight modules. Passed QC080000 system certification.
- 2020: Mass production of automotive before-market LCD display modules.
- 2022: Mass production of automotive before-market optical lamination touch LCD display modules
- 2025: Established AI Information Service Team.

# Consolidated Income Statement Comparison

Unit: NT\$ Thousands

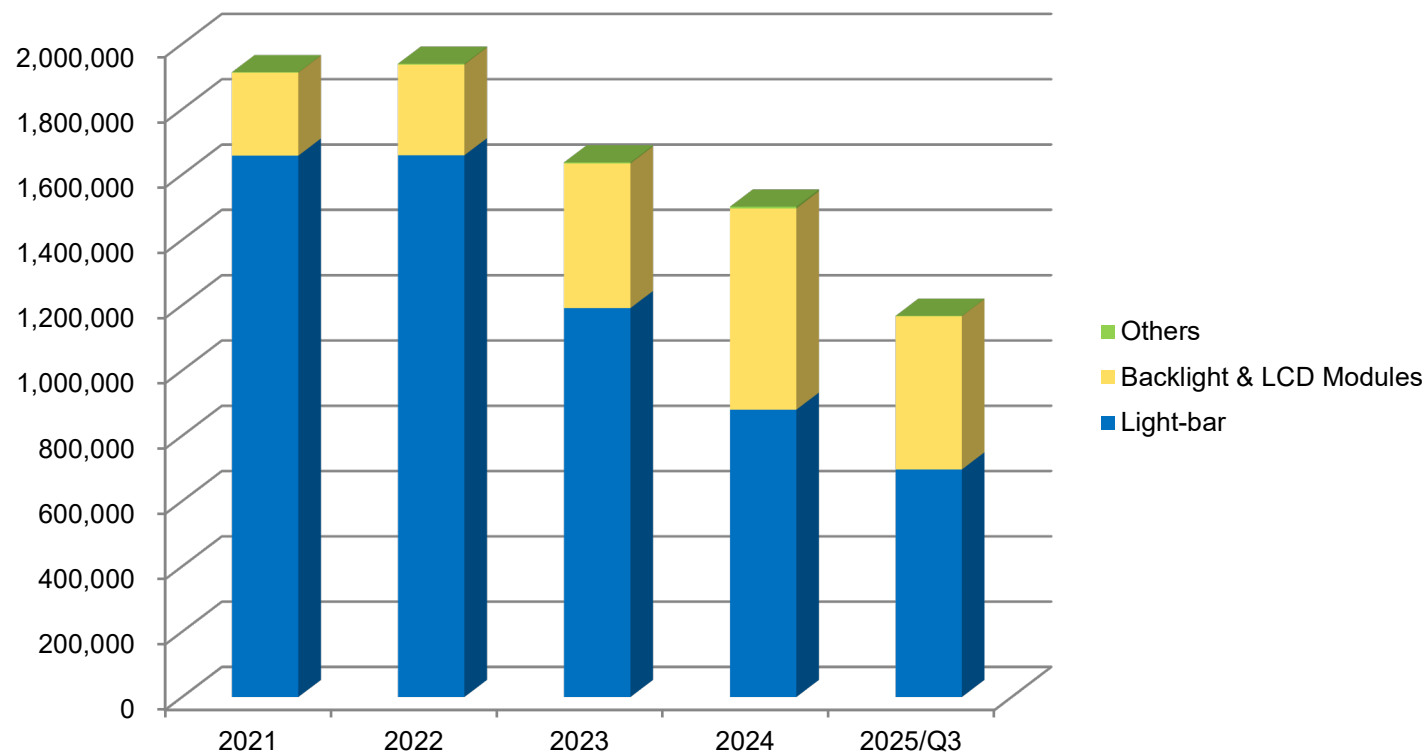
Item	Jan~Sep 2025		2024		2023	
<b>Net Revenue</b>	1,167,547	100%	1,501,968	100%	1,637,430	100%
Operating Costs	(1,029,727)	88%	(1,356,318)	(90%)	(1,491,688)	(91%)
<b>Gross Profit</b>	137,820	12%	145,650	10%	145,742	9%
Operating Expenses	(120,396)	(10%)	(197,980)	(13%)	(162,060)	(10%)
<b>Operating Income (Loss)</b>	17,424	2%	(52,330)	(3%)	(16,318)	(1%)
Non-operating Income/Exp	(953)	-	(1,136)	-	(807)	-
<b>Pre-tax Income (Loss)</b>	16,471	1%	(53,466)	(3%)	(17,125)	(1%)
<b>Net Income (Loss)</b>	(1,450)	(1%)	(50,013)	(3%)	(14,463)	(1%)
<b>EPS (NT Dollars)</b>	(0.04)		(1.32)		(0.38)	

# Consolidated Balance Sheet & Key Analysis

Unit: NT\$ Thousands

Item	2025/9/30	%	2024/12/31	%	2023/12/31	%
Total Current Assets	1,061,783	90	1,171,788	90	1,125,222	89
Total Non-Current Assets	124,893	10	126,681	10	124,376	11
Total Assets	1,186,676	100	1,298,469	100	1,249,598	100
Total Current Liabilities	821,784	69	893,823	69	817,113	65
Total Non-Current Liabilities	7,172	-	16,222	1	15,704	2
Total Liabilities	828,956	69	910,045	70	832,817	67
Total Equity	357,720	31	388,424	30	416,781	33

# Annual Consolidated Revenue



	2021	2022	2023	2024	2025/Q3
Light Bar	1,658,131	1,659,230	1,191,238	880,076	697,030
Backlight & LCD Modules	254,072	277,660	442,853	616,283	469,259
Others	1,409	2,609	3,339	5,609	1,258
<b>Total</b>	<b>1,913,612</b>	<b>1,939,499</b>	<b>1,637,430</b>	<b>1,501,968</b>	<b>1,167,547</b>

Unit: NT\$ Thousands

# Display Components

- **Foundation & Strategic Pivot:**

- Foundation: Started R&D and production of backlight modules for consumer electronics in 2003.
- Strategy Pivot: As market demand evolved, our product strategy shifted to focus on industrial control applications and front-market automotive products to align with the current smart mobility and IoT era.

- **Core Competencies:**

- Market Demand: Ability to meet requirements for high reliability, long life cycles, and stable High-Mix Low-Volume (HMLV) customized products.
- Capability Building: Built high-efficiency flexible production capabilities and a robust, resilient operational system.

- **Service Expansion & One-Stop Solutions:**

- Resource Investment: Continuously invested resources in recent years to introduce advanced module assembly and optical full-lamination equipment.
- Product Line Extension: Through these investments, our product line has expanded to complete LCD module assemblies.
- Value Proposition: Capable of providing comprehensive one-stop solutions directly to System Integrators (SI) or Tier 1 customers.

- **Quality Commitment: To ensure products fully comply with strict automotive industry quality standards, our factories have obtained multiple international certifications:**

- IATF 16949 (Automotive Quality Management System)
- ISO 9001 (Quality Management System)
- ISO 14001 (Environmental Management System)
- QC080000 (Hazardous Substance Process Management)

# Display Components - Automotive LCD Modules

The Chinese automotive market is one of the fastest-growing and most vibrant markets globally. Cars are no longer just transportation tools but have evolved into highly connected "Mobile Information Centers." This transformation, coupled with huge domestic demand, has driven explosive industry growth. Tai-Long Electronics seized this trend, leveraging its deep foundation in display components to aggressively enter the R&D and manufacturing of front-market automotive LCD modules. Through continuous team efforts, our products have successfully entered major Chinese automotive brands, with client numbers and shipment volumes increasing annually.



吉利汽车  
GEELY GEELY AUTO



CHERY

HAVAL



长城汽车



广汽传祺



广汽  
HONDA



LEAPMOTOR  
零跑汽车



北汽集团  
BAIC Group



上汽集团  
SAIC MOTOR



ROEWE  
荣威



MAZDA  
长安马自达



DONGFENG



HONG

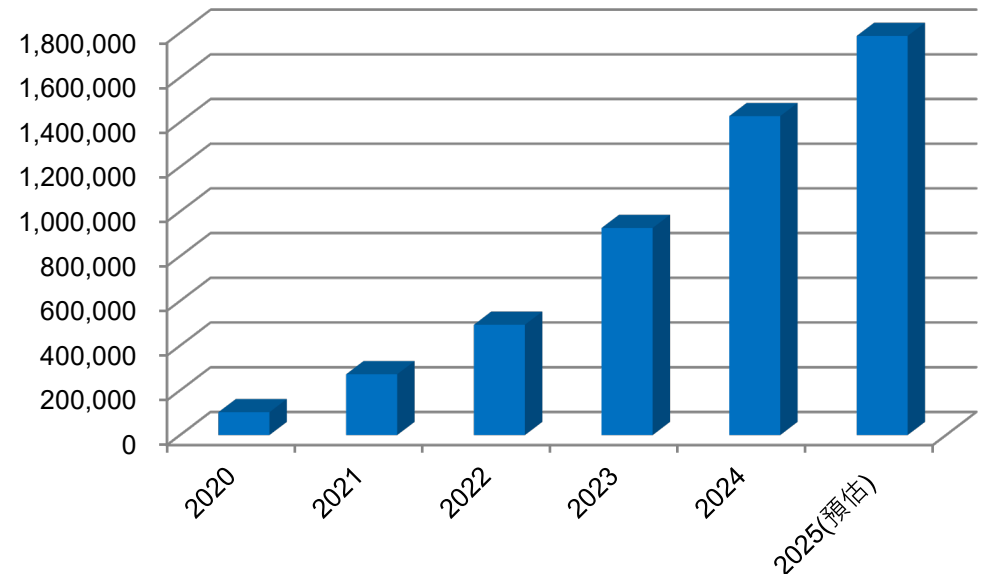


GEOMETRY  
几何汽车



长安汽车  
CHANGAN AUTO

Automotive LCD Module Shipment  
Quantity (2020-2025 Est.)

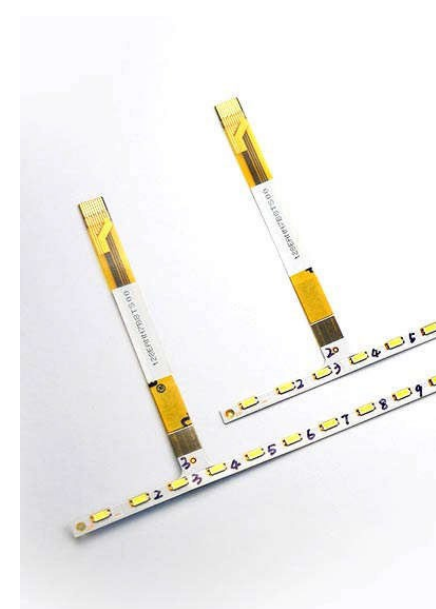
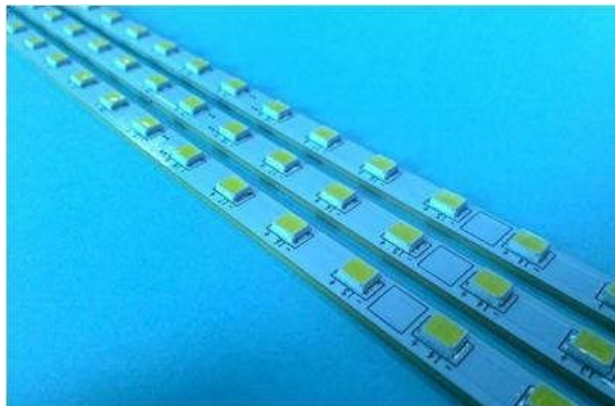
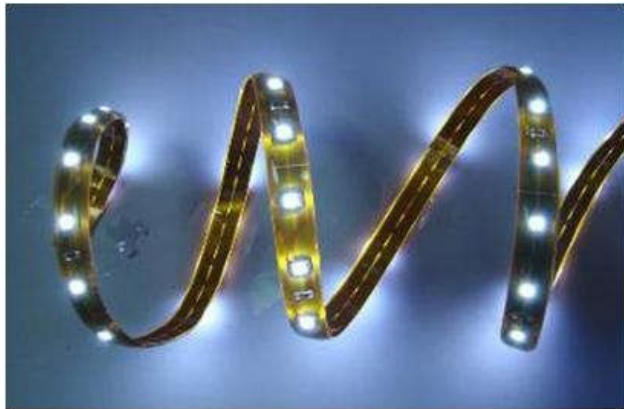


# Display Components - Automotive LCD Modules



# Display Components - LED Light Bar

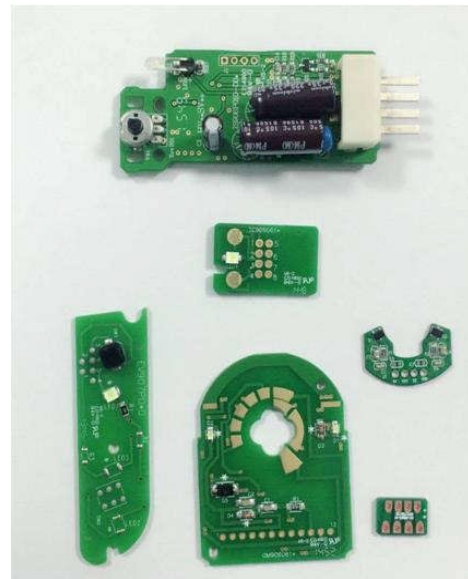
- Overview: The LED Light Bar is another main product line of our company. Its application range is extremely wide, covering backlight modules for consumer electronics, industrial control, medical equipment, military products, and before-market automotive sectors.
- Supply Chain: In addition to stably supplying our group's internal backlight module factories, our products are also key designated supplies for major backlight module and panel factories in Taiwan and Mainland China.
- Certifications: To ensure product quality and compliance with industry standards, our factories have passed multiple international certifications, including ISO 9001, ISO 14001, and the highest automotive industry standard, IATF 16949.



# SMT Products - Automotive Electronics

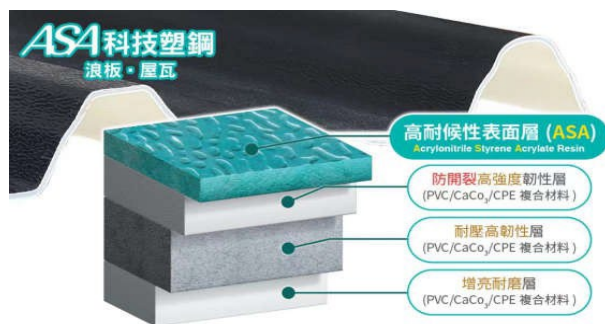
The global automotive market continues to grow. With the investment in the new energy vehicle industry, the Asian and Chinese markets remain the largest regional markets globally and continue to expand their share. Tai-Long Electronics integrates technical resources to join the automotive/new energy vehicle mainboard production chain, continuously supplying mainboards for known car manufacturers including automotive switches, door locks, and charging indicators.

- Automotive Charging Pile Mainboards
- Automotive Charging Indicator Light Mainboards
- Door Lock Mainboards
- Automotive Control Switches
- Window Anti-Pinch Motor Mainboards
- Automotive Indicator Light Switches



# ASA Reinforced Plastic Corrugated

- Introduction: The company has introduced and sells the latest generation of ASA technology plastic steel roofing sheets. With claims of being eco-friendly, lightweight, and more durable, it is the best alternative to painted steel sheets.
- Problem Statement: In Taiwan, iron sheet steel structures are popular due to low construction costs and short construction times. However, iron materials are not resistant to salt, acid, and alkali corrosion; they rust easily, dent, and deform, requiring replacement after a few years.
- Technology: Tailon ASA Tech Plastic Steel Roofing Sheets/Tiles are processed in one go through high-performance co-extrusion assembly line equipment. They consist of a surface layer of ASA (Acrylonitrile Styrene Acrylate Resin) and three layers of PVC/CaCo3/CPE, totaling four layers. The material formula for each layer is designed based on product characteristics.
- Benefits: The surface ASA resin is acid/alkali resistant, corrosion-resistant, and UV resistant. It does not degrade in performance even after long-term exposure to harsh environments. It is one of the plastics with the best weather resistance, about 10 times higher than ABS. The 3 layers of PVC/CaCo3/CPE possess excellent mechanical properties, strong acid/alkali resistance, and stable chemical performance.



※專利申請字號111206113



# Future Outlook - AI System Services

- **Establishment:** Tailon established the AI System Service Team in Q3 of this year. With AI technology as the core, we are dedicated to creating cross-industry smart application solutions, assisting enterprises in moving from traditional processes to a new era of digitization and automation.
- **Three Strategic Areas:** We focus on: "AI Virtual Customer Service," "Digital Human Interactive Applications," and "AI Professional Smart Assistants," transforming leading AI technology into system services that create actual commercial value.
- **Service Philosophy:** Upholding the concept "Intelligence brings services closer," we not only provide mature software systems but also deeply assist enterprises in AI adoption strategy planning, customized model training, and backend system maintenance, forming a complete one-stop smart application service ecosystem.
- **Transformation:** The company is actively pursuing strategic transformation, extending from traditional electronics manufacturing to the AI system service field, thereby opening up new stable revenue sources and establishing a third core business for sustainable corporate development.

# Future Outlook - AI System Services

- **AI Virtual Customer Service:** Developed by combining cutting-edge language models with deep refinement adjustments to create an intelligent customer service system capable of immediate response and precise intent judgment. This system can connect to websites, LINE official accounts, or KIOSK machines, and integrate in real-time with internal enterprise databases to provide customers with a high-efficiency and humanized interactive experience.
- **"Digital Human" Applications:** Integrates voice synthesis and AI intelligent dynamic generation technology to create virtual characters. Broad application scenarios include live streaming, smart navigation, information broadcasting, online education, virtual service counters, and brand marketing. Enterprises can interact with customers in a brand-new way through virtual avatars, effectively enhancing brand memory and service consistency.
- **AI Professional Smart Assistant:** A powerful helper for professional corporate departments, solving pain points in finding and training manpower. Through image recognition, database collection/analysis, document summarization, and automatic intelligent report generation, it can significantly improve the efficiency of professional work such as accounting, auditing, or legal affairs, and drastically enhance the precision of data processing and judgment.





# Thank You!

**Taiwan Thick-Film Industries Corp.**

**TEL:** (02)22772828 **FAX:** (02)22990520

**Add:** 3F, No. 7, Lane 332, Siyuan Road,  
Xinzhuang District, New Taipei City

**Web:** [www.tai-lon.com](http://www.tai-lon.com)